

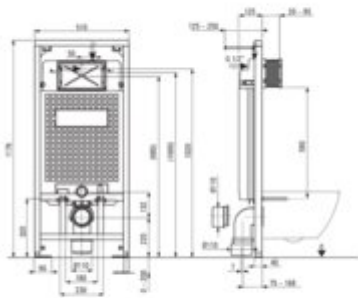
## Concealed frame, for wall-mounted toilet bowls

**Product code:** CSTEWC01

**EAN:** 5907650870180

**Color:** nero

**Warranty [years]:** 10



Width [mm]	510
Height [mm]	1176
Depth [mm]	125
Frame height adjustment [mm]	200
Tank capacity [l]	9
Water connection	at the top, from behind
Designated for light casing	yes
Designated for installation in front of the load-bearing wall	yes
Connection valve G1/2"	yes
Silent flushing and filling	yes
Mounting bolts spacing 180 mm and 230 mm	yes
Flush volume adjustment	yes

### Features:

- Easy Lock wall mount kit - quicker and easier installation, accurate settings
- The frame is equipped with an economical double flush system: 4 and 2 liters
- Easy installation in lightweight construction or in front of a load-bearing wall
- Innovative angular mounting to the tank - easier and faster installation
- Fixing holes - universal installation options
- New reliable filling valve - quiet, fast and extremely durable
- More convenient installation of the toilet bowl
- New hinges for tanks with two-component insulation
- Frame with class I loudness